

# Laurel Promenade

SEC Laurel Canyon Blvd & Ventura Blvd, Studio City, CA



## Project Features

- ◆ 2 Lease Opportunities (food uses allowed):
  - ◆ Ground Floor - 5,630 SF endcap
  - ◆ Second Floor - 3,269 SF in-line
- ◆ Asking Rents: \$48.00-\$84.00 PSF/Year  
NNN = \$24.00 PSF/Year
- ◆ Traffic Counts: Ventura Blvd – 36,400 CPD  
Laurel Canyon Blvd – 33,100 CPD

## Demographics

(2025 Estimates)	<u>1 Mile</u>	<u>3 Mile</u>	<u>5 Mile</u>
Population	21,551	196,089	598,447
Avg. HH Income	\$237,907	\$171,849	\$158,486
Daytime Population	11,312	79,971	318,232



**Kieran Sheridan**

CA Lic. #02108499

ksheridan@clovercompany.com

**Patrick Gilhooly**

CA Lic. #01210372

pgilhooly@clovercompany.com

THE  
**CLOVER**  
COMPANY  
Retail Real Estate Services

8675 Washington Blvd, Suite 201

Culver City, CA 90232

Phone: (310) 815-8611

www.clovercompany.com

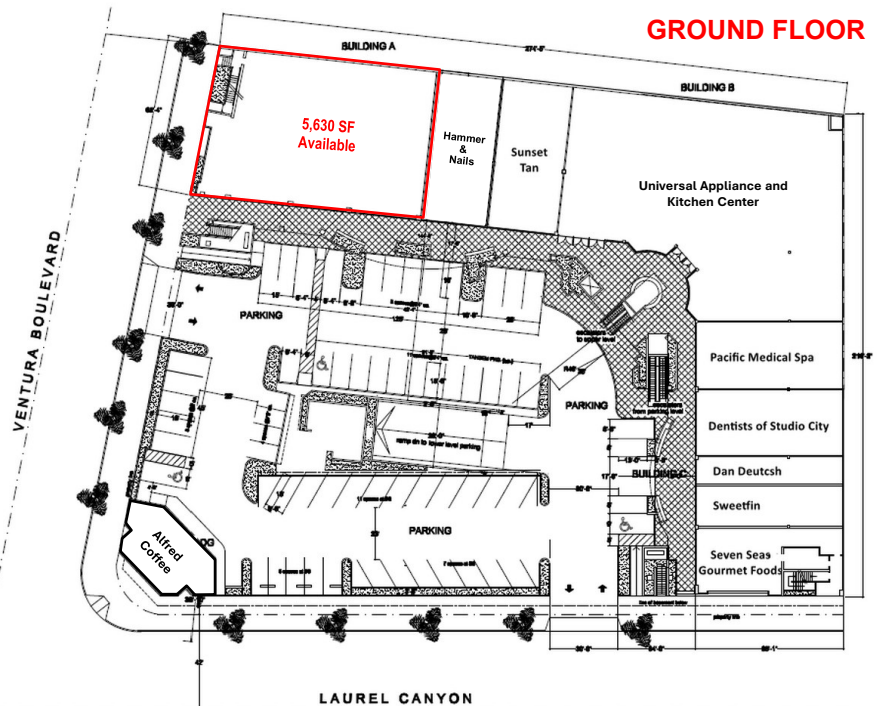
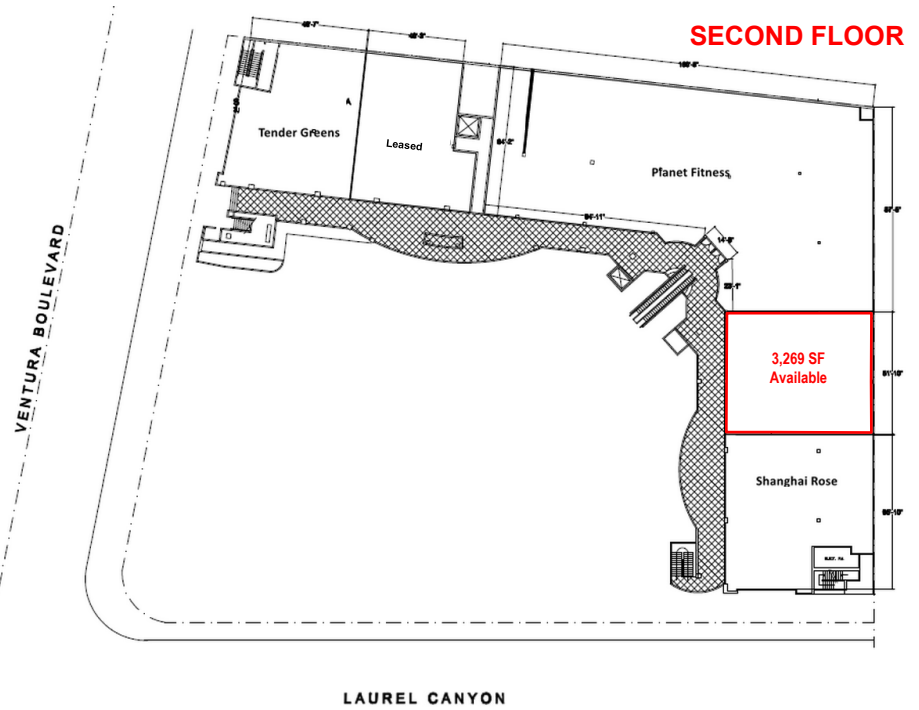
**Laurel Center Group  
California, LP**

The information contained herein has been obtained from sources we deem reliable. While we have no reason to doubt its accuracy, we do not guarantee it. All measurements and other facts shown are approximate, and should be independently verified by you and may not be relied upon as a precise representation by this office.



# Laurel Promenade

SEC Laurel Canyon Blvd & Ventura Blvd, Studio City, CA



**Kieran Sheridan**

CA Lic. #02108499

ksheridan@clovercompany.com

**Patrick Gilhooly**

CA Lic. #01210372

pgilhooly@clovercompany.com

THE  
**CLOVER**  
COMPANY  
Retail Real Estate Services

8675 Washington Blvd, Suite 201

Culver City, CA 90232

Phone: (310) 815-8611

www.clovercompany.com

**Laurel Center Group  
California, LP**

The information contained herein has been obtained from sources we deem reliable. While we have no reason to doubt its accuracy, we do not guarantee it. All measurements and other facts shown are approximate, and should be independently verified by you and may not be relied upon as a precise representation by this office.