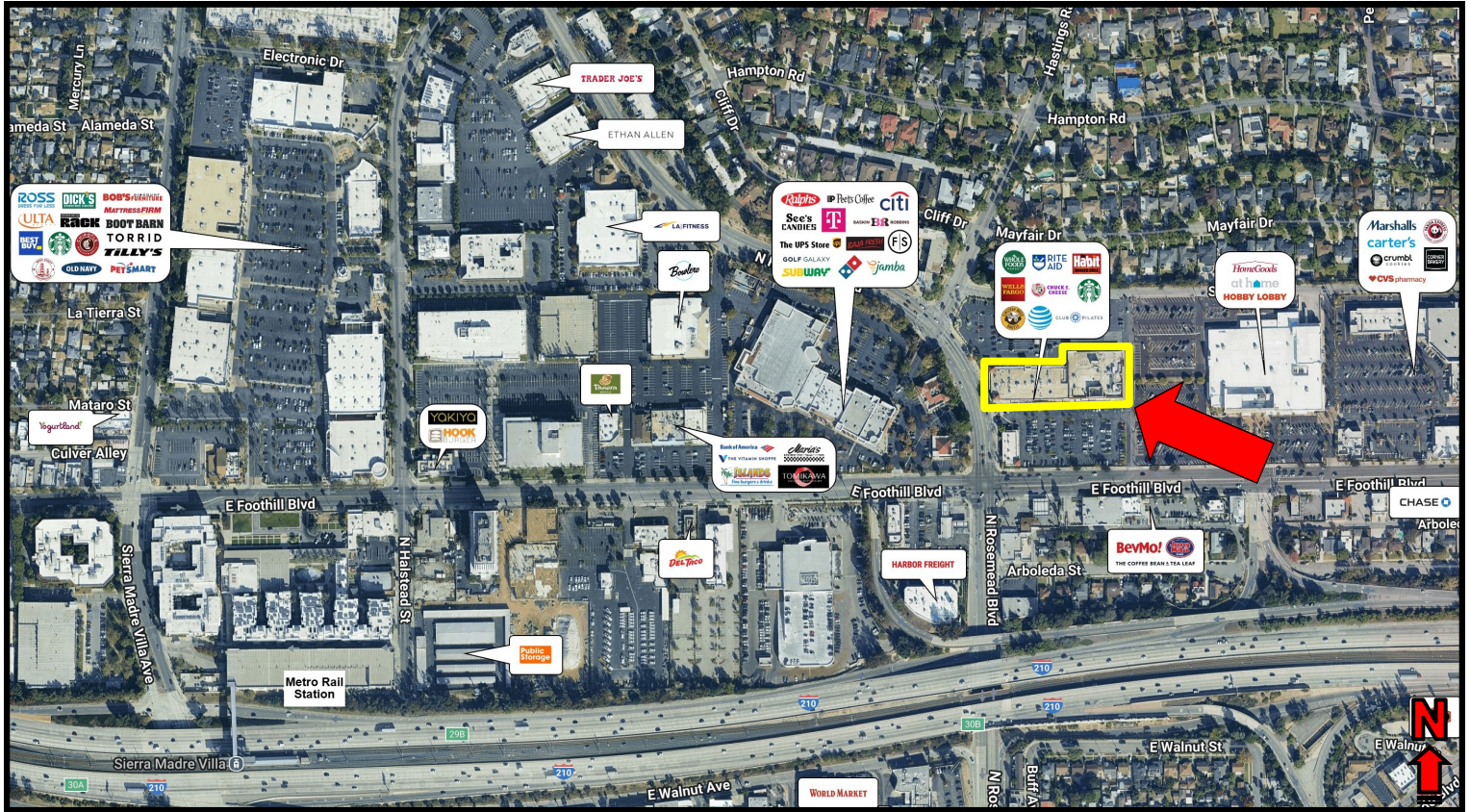


# HASTINGS RANCH SHOPPING CENTER

## East Pasadena, CA

### NEC Foothill Blvd & Rosemead Blvd

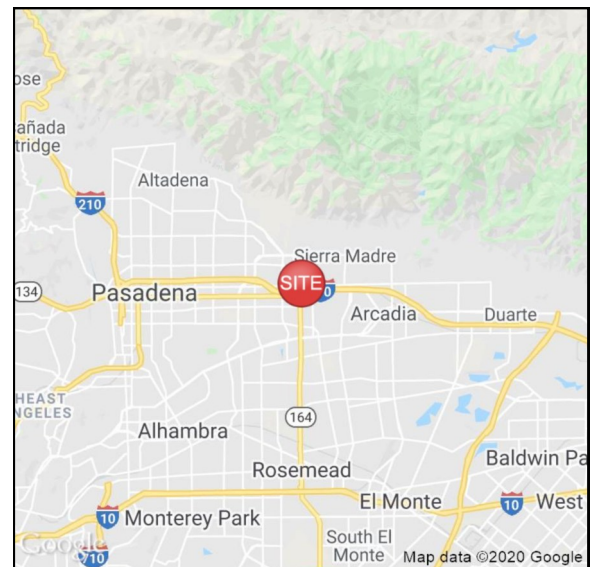


## Project Features

- ◆ 6,615 SF & 20,420 SF available in 130,000 SF center anchored by Whole Foods Market
- ◆ Pylon signage opportunity on Foothill & Rosemead
- ◆ Asking Rents: \$36.00 + \$11.11 NNN (estimated)
- ◆ Traffic Counts: Foothill Blvd - 22,196 CPD  
Rosemead Blvd - 17,359 CPD

## Demographics

(2025 Estimates)	1 Mile	3 Mile	5 Mile
Population	13,750	136,055	406,232
Avg. HH Income	\$176,182	\$180,495	\$160,296
Daytime Population	8,975	57,197	178,956



Patrick Gilhooly

CA Lic. #01210372

pgilhooly@clovercompany.com

Kieran Sheridan

CA Lic. #02108499

ksheridan@clovercompany.com

THE  
CLOVER  
COMPANY  
Retail Real Estate Services

8675 Washington Blvd, Suite 201

Culver City, CA 90232

Phone: (310) 815-8611

www.clovercompany.com

The ARBA Group, Inc.

The information contained herein has been obtained from sources we deem reliable. While we have no reason to doubt its accuracy, we do not guarantee it. All measurements and other facts shown are approximate, and should be independently verified by you and may not be relied upon as a precise representation by this office.





**FIRST LEVEL**



**SECOND LEVEL**



**Patrick Gilhooly**

CA Lic. #01210372

pgilhooly@clovercompany.com

**Kieran Sheridan**

CA Lic. #02108499

ksheridan@clovercompany.com

**THE CLOVER COMPANY**  
Retail Real Estate Services

8675 Washington Blvd, Suite 201

Culver City, CA 90232

Phone: (310) 815-8611

www.clovercompany.com

**The ARBA Group, Inc.**

The information contained herein has been obtained from sources we deem reliable. While we have no reason to doubt its accuracy, we do not guarantee it. All measurements and other facts shown are approximate, and should be independently verified by you and may not be relied upon as a precise representation by this office.